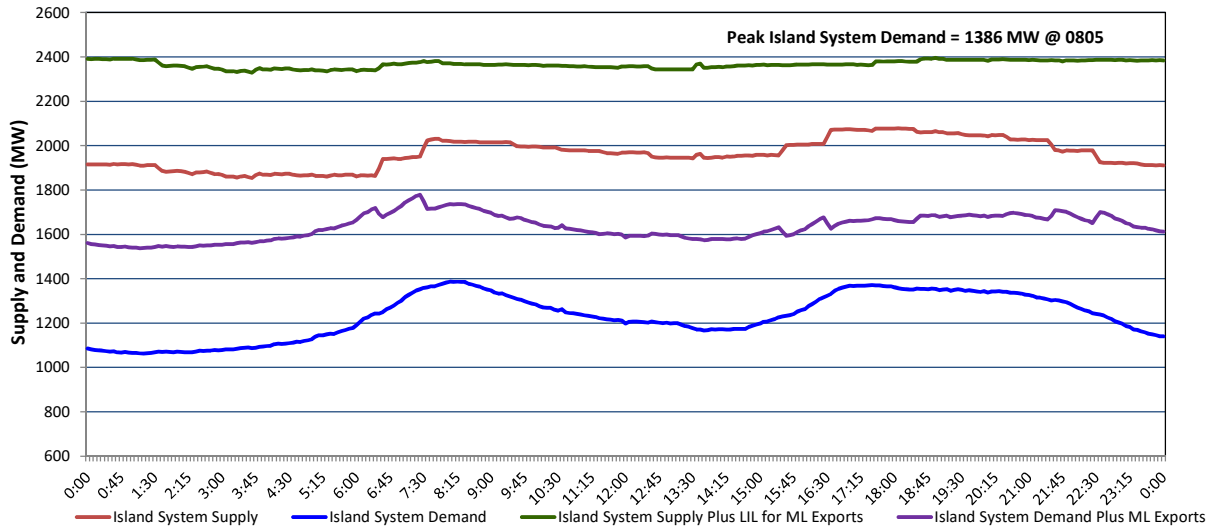


Newfoundland Labrador Hydro (NLH) Supply and Demand Status Report Filed Wednesday, December 11, 2024

Section 1 Island Interconnected System - Supply, Demand & Exports Actual 24 Hour System Performance For Tuesday, December 10, 2024



Island Supply Notes For December 10, 2024 ¹

A As of 0000 hours, October 20, 2024, Holyrood Unit 1 unavailable due to forced extension to planned outage (170 MW).

Section 2 Island Interconnected System - Supply, Demand & Outlook

Wed, Dec 11, 2024	Island System Outlook ²	Seven-Day Forecast	Island System Daily Peak Demand (MW)	
			Forecast ⁸	Adjusted ⁶
Island System Supply: ⁴	2,105 MW	Wednesday, December 11, 2024	1,335	1,255
NLH Island Generation: ^{3,7}	1,525 MW	Thursday, December 12, 2024	1,040	960
NLH Island Power Purchases: ⁵	110 MW	Friday, December 13, 2024	1,185	1,105
NP and CBPP Owned Generation:	215 MW	Saturday, December 14, 2024	1,325	1,245
LIL/ML Net Imports to Island: ⁹	255 MW	Sunday, December 15, 2024	1,380	1,300
		Monday, December 16, 2024	1,400	1,320
7-Day Island Peak Demand Forecast:	1,400 MW	Tuesday, December 17, 2024	1,280	1,200

Island Supply Notes For December 11, 2024

Notes:

1. Generation outages for running and corrective maintenance are included. These are not unusual for power system operations. They generally do not impact customer supply. Hydro schedules outages to system equipment whenever possible to coincide with periods when customer demands are low and sufficient supply reserves are available. However, from time to time equipment outages are necessary and reserves may be impacted.
2. As of 0800 Hours.
3. Gross continuous unit output.
4. Gross output from all Island sources (including Note 4).
5. NLH Island Power Purchases include: ML Imports, Exploits Generation, Rattle Brook, Star Lake, Wind Generation and capacity assistance (when applicable).
6. Adjusted for interruptible load and the impact of voltage reduction when applicable.
7. Due to limitations inherent in the design of combustion turbines, the output of combustion turbines may be reduced in the event that ambient temperatures exceed the threshold required for full rated output. This threshold is dependent on the design of each turbine.
8. Does not include ML Exports.
9. LIL Import sunk in the Island System. Actual LIL flows will be restricted by various system conditions including, but not limited to, Island Load, ML Exports and Avalon Unit status.

Section 3 Island Peak Demand and Exports Information Previous Day Actual Peak and Current Day Forecast Peak

Tue, Dec 10, 2024	Island Peak Demand ¹⁰	8:05	1,386 MW
	Exports at Peak		350 MW
	LIL Net Imports to Island		4,060 MWh
Wed, Dec 11, 2024	Forecast Island Peak Demand		1,335 MW

Notes: 10. Island Demand is supplied by NLH generation and purchases, LIL Imports plus generation owned and operated by Newfoundland Power and Corner Brook Pulp & Paper (Deer Lake Power, DLP).